



CF Care in Spain



Sílvia Rodríguez Torres
Hospital Sant Joan de Déu
Barcelona, Spain
June 12th 2013

Sant Joan de Déu



- Ancient Sant Joan de Déu



- Hospital new design



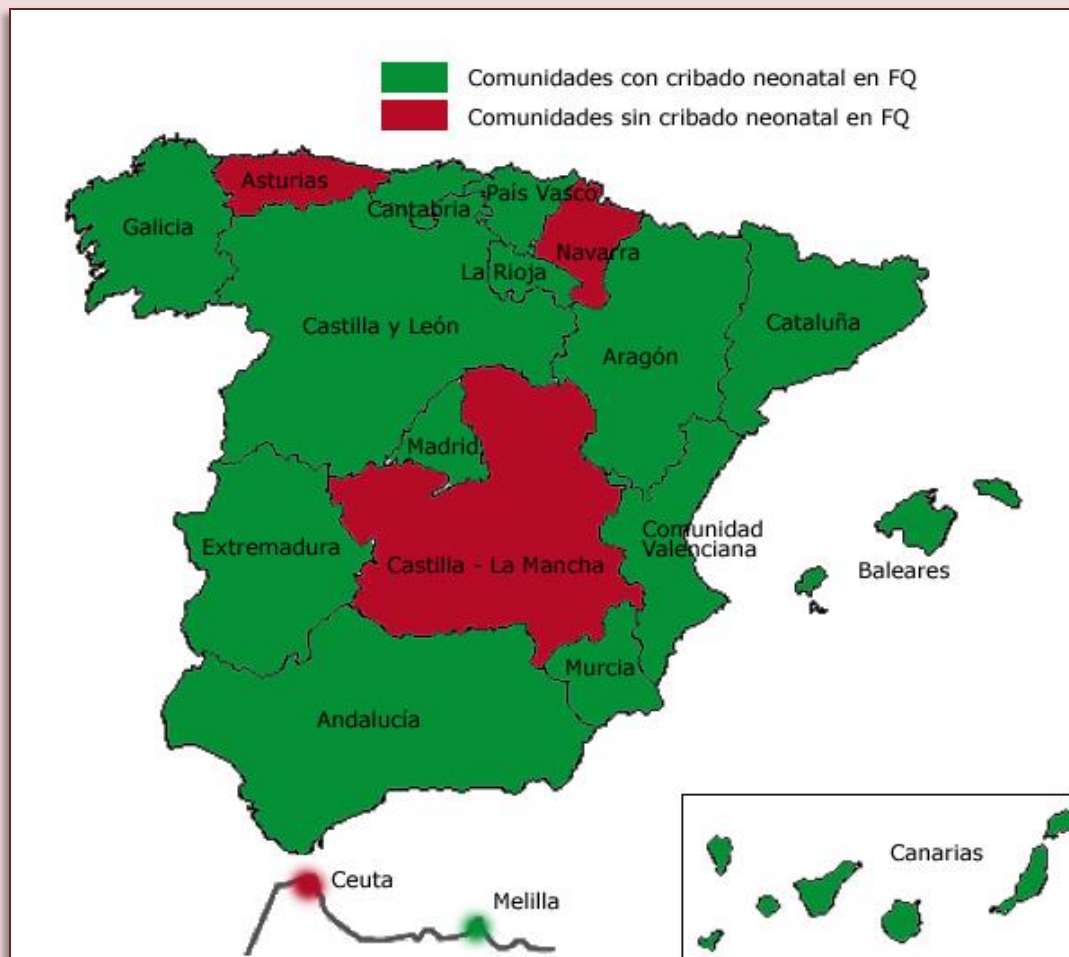
CF- population



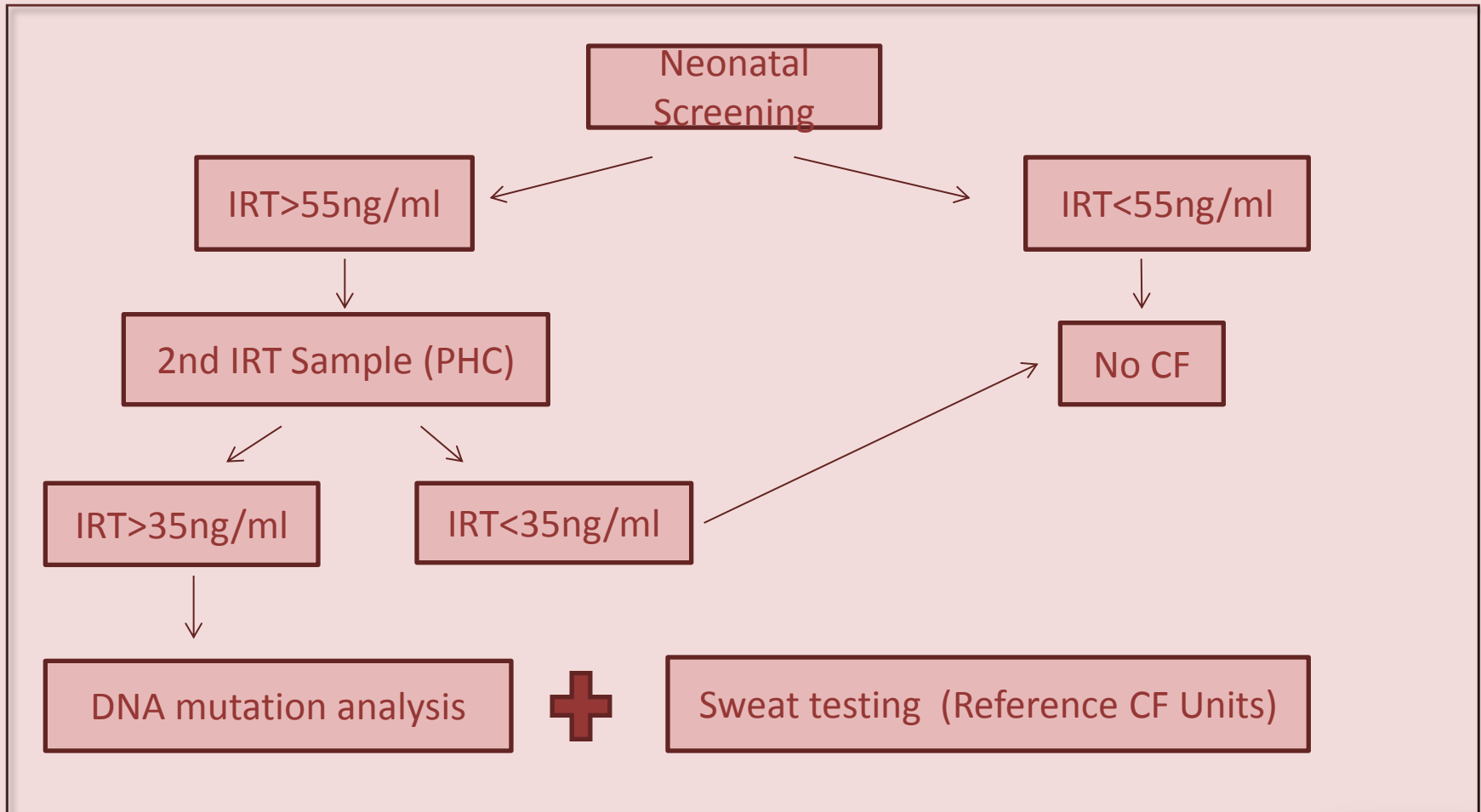
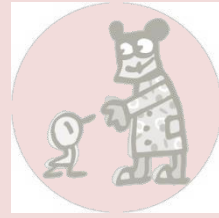
- No CF patients' register in Spain.
- 3500-3700 (60% < 18y)



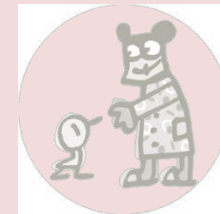
CF-Screening program






CF-Screening program

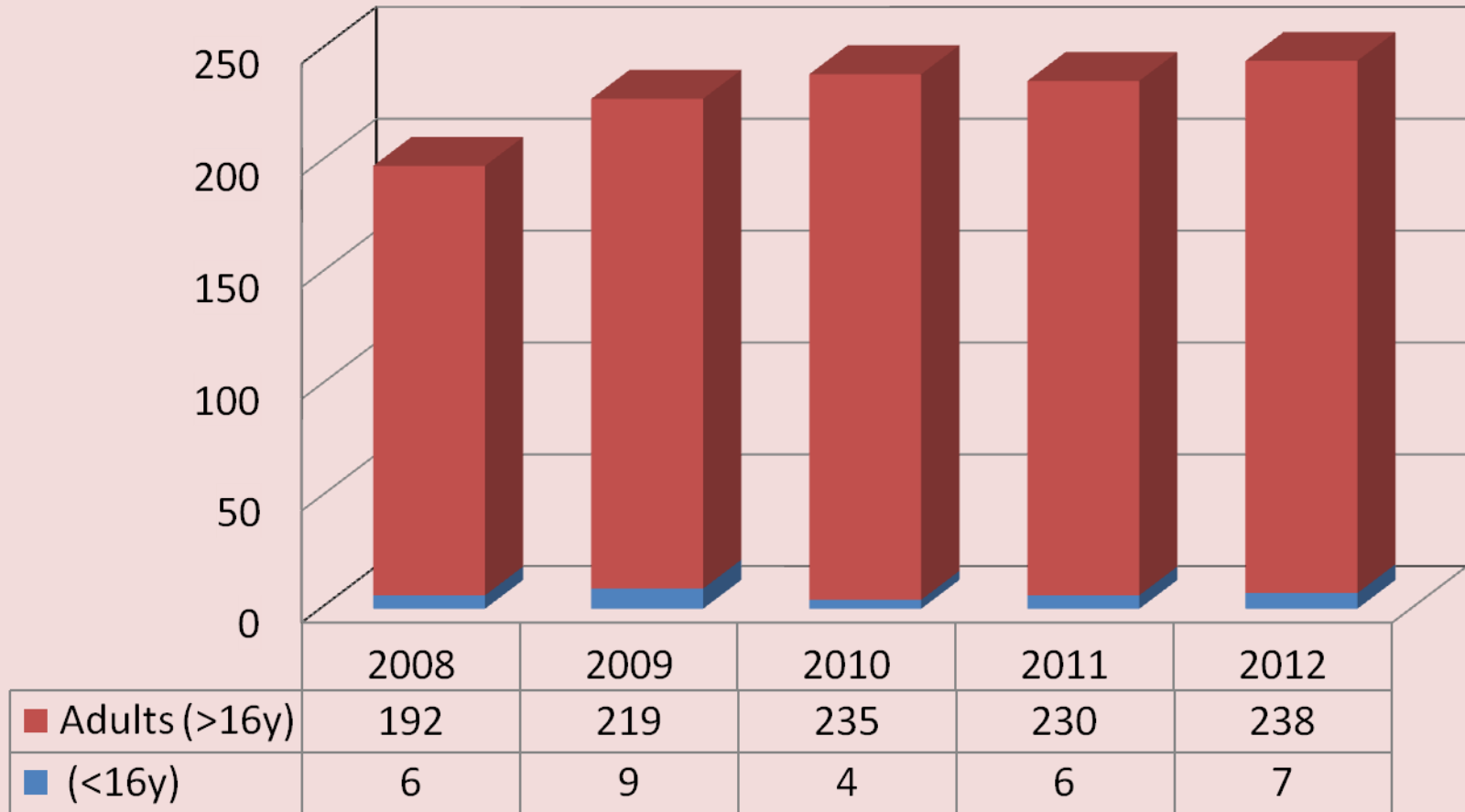
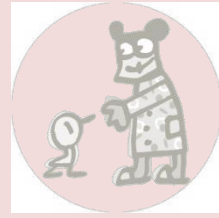


CF-Centres in Spain

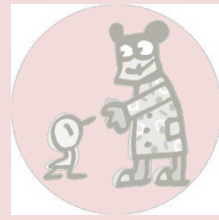


-  Centers with >50 patients per unit
-  Centres with < 50 patients per unit
-  Hospitals that take care of patients with CF (no reference unit)

Lung transplantation incidence in Spain

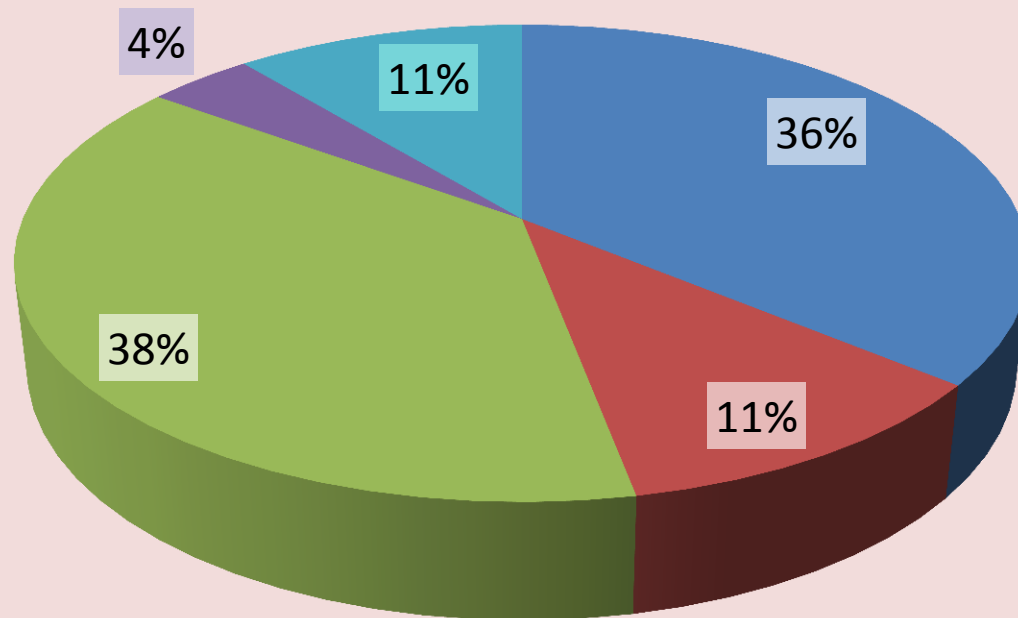


Lung transplantation

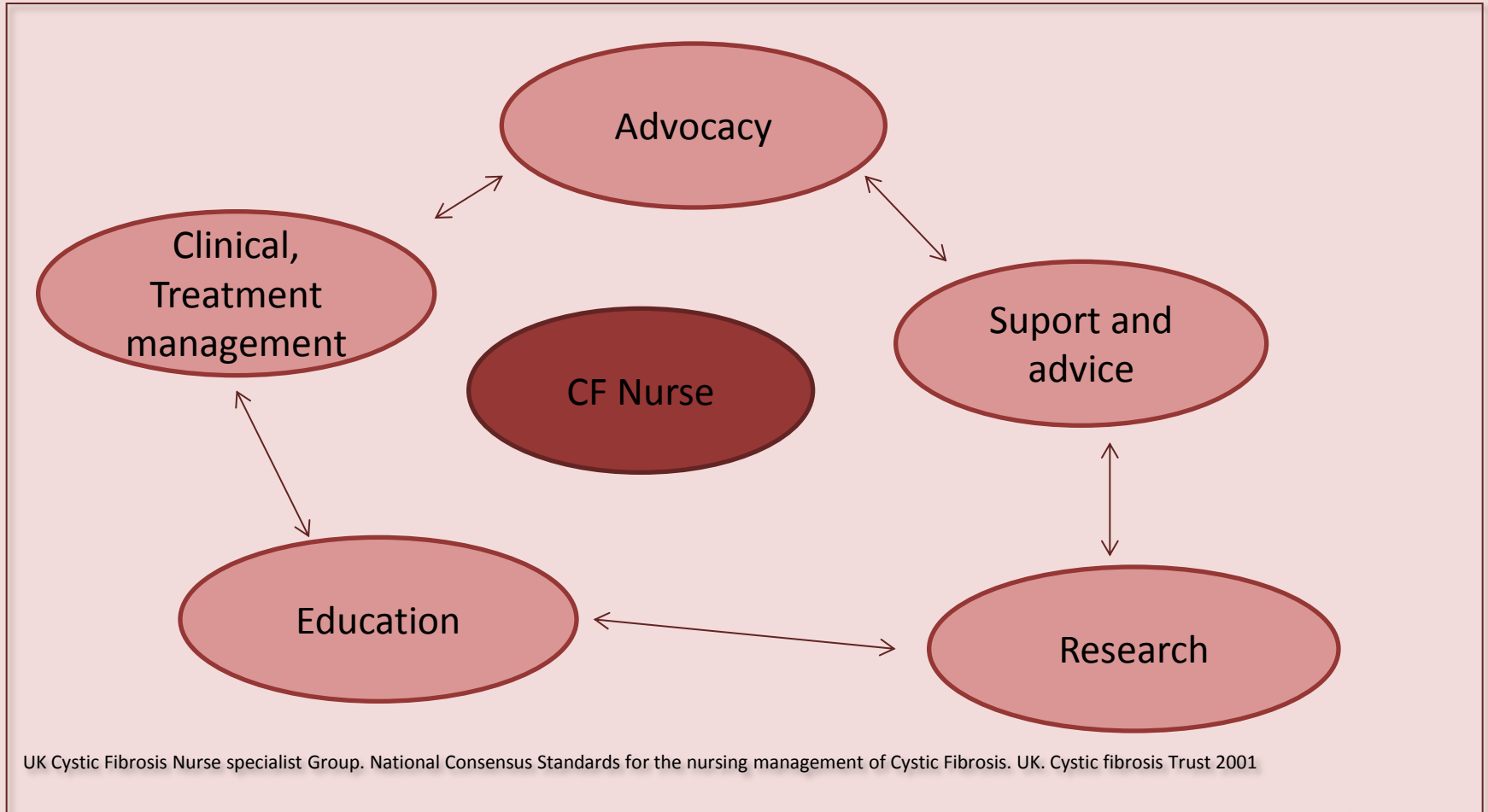
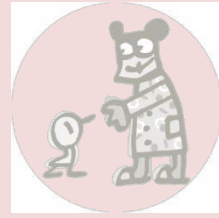


Lung transplantation diagnosis in Spain in 2012

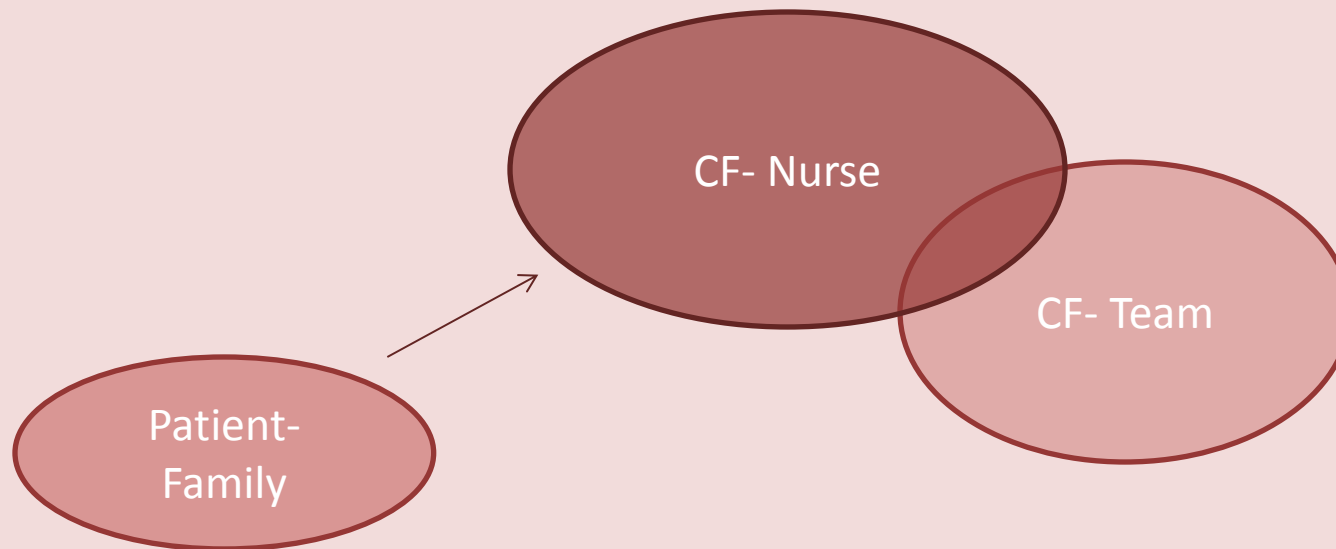
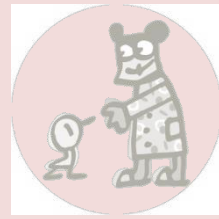
■ EPID ■ CF ■ EPOC ■ HTP ■ OTHER



CF-Nurses (Roles)



CF-Nurses Challenge



Tú respiras sin pensar...
yo sólo pienso en respirar.

Thank you

Muito obrigado

